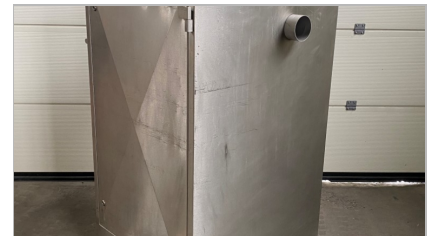
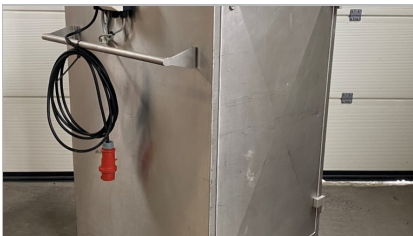
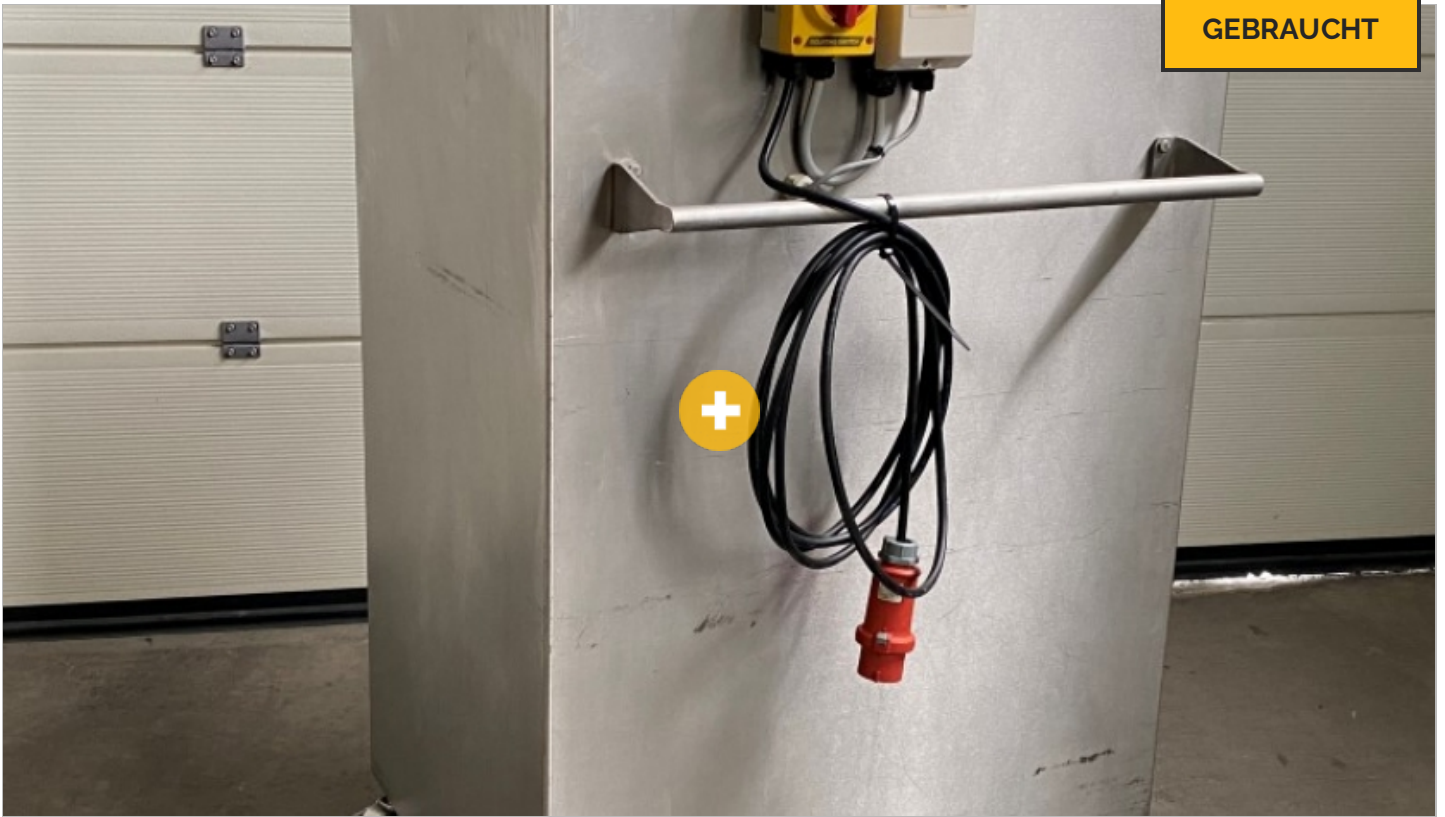


GEBRAUCHT



STAUBABSAUGUNG FÜR BEMEHLUNGSANLAGE "STORK - MAREL"

Dust exhaust unit

Typ TDE

- fahrbar
- Dimensionen (L x B x H) : ± 900 x 900 x 1.600 mm
- Autonomer Betrieb (kann an fast alle Arten von Bemehlungsanlage angeschlossen werden)

Interested? Contact us!
phone: +32 56 77 33 50 - email: info@barsso.com